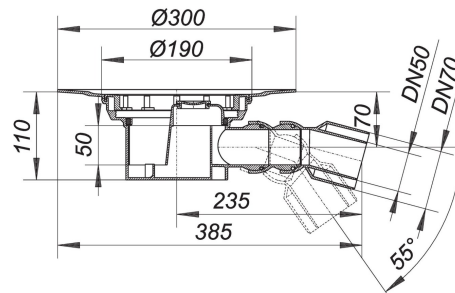


21. November 2019

DALLMER

Floor drain body type 54, DN 50/DN 70

Product No. **541055**
 EAN: 4001636541055
 Discount group: 3



conforming to DIN EN 1253
 outlet DN 50/DN 70 horizontal, with double ball-joint, adjustable 0 - 55 degrees

specification:

- trap insert, 50 mm water seal
- rodding eye*
- temporary blanking plate

material:

polypropylene

The outlet connector can be supplied in ABS to suit British Standard sizes and PE-HD conforming to DIN EN 1519. Please enquire.

* Access to trap and outlet via rodding eye.

Flow rate tested to DIN EN 1253
 (with 20 mm water over grate)

	Norm	DALLMER
DN 50	0.8 l/s	0.96 l/s
DN 70	0.8 l/s	0.87 l/s

Product No.	Description	Dimensions
590091	centralising ring for drain bodies type 54, 55, 57, 58, 61	
590015	screwed plug for 54, 55, 57, 57 AK, 58, 71	

Dallmer GmbH + Co KG · Wiebelsheidestraße 25 · 59757 Arnsberg / Germany · Tel.: +49 2932 9616-0 · Fax: +49 2932 9616-222
 www.dallmer.de · info@dallmer.de

Subject to modifications due to technical development, errors and misprints.

21. November 2019

DALLMER

Product No.	Description	Dimensions
693006	Back flow seal CeraDrain S 15	
590022	back flow seal S 15	
563002	Collar CeraDrain S 15	
563200	Collar TistoDrain S 15	
591005	extension S 15	
591012	extension S 15, side inlet DN 40	
500519	frame E 15, 100 x 100 mm	100 x 100 mm
500564	frame ECS 15, 100 x 100 mm	100 x 100 mm
500700	frame GES 15, 200 x 200 mm	200 x 200 mm
500670	frame K 15, 150 x 150 mm	150 x 150 mm
500571	frame PVC 15, 150 x 150 mm	150 x 150 mm
500625	frame S 15, 304 stainless steel, 150 x 150 mm	150 x 150 mm
500618	frame S 15, 316 stainless steel, 150 x 150 mm	150 x 150 mm
500601	frame S 15/120	d: 120 mm
500755	frame VER 15, 304 stainless steel, d: 155 mm	d: 155 mm
500663	frame VS 15, 150 x 150 mm	150 x 150 mm
500182	grating DES 15, cover plate stainless steel, 150 x 150 mm	150 x 150 mm
500014	grating E 15, 100 x 100 mm	100 x 100 mm
500052	grating EC 15, 100 x 100 mm	100 x 100 mm
500076	grating ECN 15, secured grate, 100 x 100 mm	100 x 100 mm
500069	grating ECS 15, massive grate, secured, 100 x 100 mm	100 x 100 mm
500083	grating EN 15, secured grate, 100 x 100 mm	100 x 100 mm
500205	grating GES 15, massiv grate, secured, 200 x 200 mm	200 x 200 mm
500175	grating K 15, polyamide grate, 150 x 150 mm	150 x 150 mm
500113	grating KE 15, 150 x 150 mm	150 x 150 mm
500229	grating KEN 15, secured grate, 150 x 150 mm	150 x 150 mm
500137	grating PVC-E 15, 150 x 150 mm	150 x 150 mm
500236	grating PVC-EN 15, secured grate, 150 x 150 mm	150 x 150 mm
500335	grating PVC-ES 15, massive grate, secured, 150 x 150 mm	150 x 150 mm
500410	grating Quadra S 15, 150 x 150 mm	
500434	grating RHS 15, 1.5 mm grate, non-slip, secured, 150 x 150 mm	150 x 150 mm
500144	grating RHS 15, massive grate, non-slip, secured, 150 x 150 mm	150 x 150 mm
500298	grating SEC 15, 150 x 150 mm	150 x 150 mm
500281	grating SEN 15, secured grate, 150 x 150 mm	150 x 150 mm
500120	grating SES 15, massive grate, secured, 150 x 150 mm	150 x 150 mm
500151	grating VEC 15, laterally adjustable, 150 x 150 mm	150 x 150 mm
500243	grating VEN 15, laterally adjustable, secured, 150 x 150 mm	150 x 150 mm
500250	grating VER 15, d: 155 mm	d: 155 mm
500168	grating VES 15, laterally adjustable, secured, 150 x 150 mm	150 x 150 mm
562005	raising piece type 550 DallBit S 15	
560001	raising piece type 550 with sealing kit S 15	
560018	raising piece type 550 without sealing kit S 15	
560506	sealing kit S 15	
590046	trap insert for 54, 55	
790125	waterproofing collar S 15, EPDM, d: 500 mm	d: 500 mm
790118	waterproofing collar S 15, flexible PVC, d: 500 mm	d: 500 mm