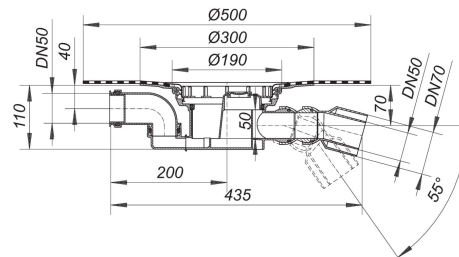


21. November 2019

DALLMER**Floor drain body type 55 DallBit, inlet DN 50, DN 50/DN 70**

Product No. **552051**
 EAN: 4001636552051
 Discount group: 3



conforming to DIN EN 1253

With d: 500 mm collar of 5.0 mm thick bituminous membrane, welded to the flange and secured with stainless steel clamp ring.
 outlet DN 50/DN 70 horizontal, with double ball-joint, adjustable 0 – 55 degrees

specification:

- DN 50 side inlet, swivelling 180 degrees
- trap insert, 50 mm water seal
- rodding eye*
- temporary blanking plate

material:

polypropylene

The outlet connector can be supplied in ABS to suit British Standard sizes and PE-HD conforming to DIN EN 1519. Please enquire.

* Access to trap and outlet via rodding eye.

Flow rate tested to DIN EN 1253
 (with 20 mm water over grate)

| | Norm | DALLMER |
|-------|---------|----------|
| DN 50 | 0.8 l/s | 0.96 l/s |
| DN 70 | 0.8 l/s | 0.87 l/s |

21. November 2019

DALLMER

| Product No. | Description | Dimensions |
|-------------|--|------------|
| 590015 | screwed plug for 54, 55, 57, 57 AK, 58, 71 | |
| 590084 | support ring, white | |

| Product No. | Description | Dimensions |
|-------------|--|--------------|
| 590022 | back flow seal S 15 | |
| 563002 | Collar CeraDrain S 15 | |
| 563200 | Collar TistoDrain S 15 | |
| 591005 | extension S 15 | |
| 591012 | extension S 15, side inlet DN 40 | |
| 500519 | frame E 15, 100 x 100 mm | 100 x 100 mm |
| 500564 | frame ECS 15, 100 x 100 mm | 100 x 100 mm |
| 500700 | frame GES 15, 200 x 200 mm | 200 x 200 mm |
| 500670 | frame K 15, 150 x 150 mm | 150 x 150 mm |
| 500571 | frame PVC 15, 150 x 150 mm | 150 x 150 mm |
| 500625 | frame S 15, 304 stainless steel, 150 x 150 mm | 150 x 150 mm |
| 500618 | frame S 15, 316 stainless steel, 150 x 150 mm | 150 x 150 mm |
| 500601 | frame S 15/120 | d: 120 mm |
| 500755 | frame VER 15, 304 stainless steel, d: 155 mm | d: 155 mm |
| 500663 | frame VS 15, 150 x 150 mm | 150 x 150 mm |
| 500182 | grating DES 15, cover plate stainless steel, 150 x 150 mm | 150 x 150 mm |
| 500014 | grating E 15, 100 x 100 mm | 100 x 100 mm |
| 500052 | grating EC 15, 100 x 100 mm | 100 x 100 mm |
| 500076 | grating ECN 15, secured grate, 100 x 100 mm | 100 x 100 mm |
| 500069 | grating ECS 15, massive grate, secured, 100 x 100 mm | 100 x 100 mm |
| 500083 | grating EN 15, secured grate, 100 x 100 mm | 100 x 100 mm |
| 500205 | grating GES 15, massiv grate, secured, 200 x 200 mm | 200 x 200 mm |
| 500175 | grating K 15, polyamide grate, 150 x 150 mm | 150 x 150 mm |
| 500113 | grating KE 15, 150 x 150 mm | 150 x 150 mm |
| 500229 | grating KEN 15, secured grate, 150 x 150 mm | 150 x 150 mm |
| 500137 | grating PVC-E 15, 150 x 150 mm | 150 x 150 mm |
| 500236 | grating PVC-EN 15, secured grate, 150 x 150 mm | 150 x 150 mm |
| 500335 | grating PVC-ES 15, massive grate, secured, 150 x 150 mm | 150 x 150 mm |
| 500410 | grating Quadra S 15, 150 x 150 mm | |
| 500434 | grating RHS 15, 1.5 mm grate, non-slip, secured, 150 x 150 mm | 150 x 150 mm |
| 500144 | grating RHS 15, massive grate, non-slip, secured, 150 x 150 mm | 150 x 150 mm |
| 500298 | grating SEC 15, 150 x 150 mm | 150 x 150 mm |
| 500281 | grating SEN 15, secured grate, 150 x 150 mm | 150 x 150 mm |
| 500120 | grating SES 15, massive grate, secured, 150 x 150 mm | 150 x 150 mm |
| 500151 | grating VEC 15, laterally adjustable, 150 x 150 mm | 150 x 150 mm |
| 500243 | grating VEN 15, laterally adjustable, secured, 150 x 150 mm | 150 x 150 mm |
| 500250 | grating VER 15, d: 155 mm | d: 155 mm |
| 500168 | grating VES 15, laterally adjustable, secured, 150 x 150 mm | 150 x 150 mm |
| 562005 | raising piece type 550 DallBit S 15 | |
| 560001 | raising piece type 550 with sealing kit S 15 | |
| 560018 | raising piece type 550 without sealing kit S 15 | |

21. November 2019

DALLMER

590046

trap insert for 54, 55