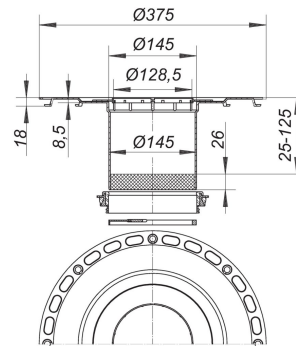
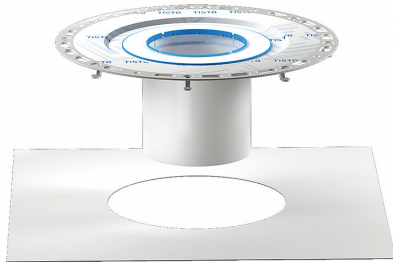


21. November 2019

DALLMER

Collar TistoDrain S 15

Product No. **563200**
 EAN: 4001636563200
 Discount group: 5



used with polypropylene floor drain bodies
 54/55, 57/58, 61 and 61/1

specification:

- ABS flange with fleece surface
- ABS spigot
- laterally adjustable upper collar
- Tisto membrane
- seal*
- spacer
- temporary blanking plate

* Please note: in cases where a secondary membrane is used and a DallBit drain was installed, then an S 15 seal (Art. Nr. 590022) must be used instead of the CeraDrain seal.

Gratings for CeraDrain S 15/TistoDrain S 15 with lateral adjustment: +/- 13 mm (type VR 15 and V, S 15/d: 155 +/- 5 mm), height adjustable 40 mm

Product No.	Description	Dimensions
693006	Back flow seal CeraDrain S 15	
563309	Membrane Tisto S 15	
693099	Upper collar CeraDrain/TistoDrain S 15	

Product No.	Description	Dimensions
591005	extension S 15	
591012	extension S 15, side inlet DN 40	
542052	Floor drain body type 54 DallBit, DN 50/DN 70	DN 50/DN 70
541055	Floor drain body type 54, DN 50/DN 70	DN 50/DN 70
552051	Floor drain body type 55 DallBit, inlet DN 50, DN 50/DN 70	DN 50/DN 70
551054	Floor drain body type 55, inlet DN 50, DN 50/DN 70	DN 50/DN 70
572073	Floor drain body type 57 DallBit, DN 70/DN 100	DN 70/DN 100
571076	Floor drain body type 57, DN 70/DN 100	DN 70/DN 100
582072	Floor drain body type 58 DallBit, inlet DN 50, DN 70/DN 100	DN 70/DN 100
581075	Floor drain body type 58, inlet DN 50, DN 50/DN 100	DN 70/DN 100
612762	floor drain body type 61 GA DallBit, DN 100 SML	DN 100 SML
612724	floor drain body type 61 GA DallBit, DN 50 SML	DN 50 SML
612748	floor drain body type 61 GA DallBit, DN 70 SML	DN 70 SML
611765	floor drain body type 61 GA, DN 100 SML	DN 100 SML
611727	floor drain body type 61 GA, DN 50 SML	DN 50 SML
611741	floor drain body type 61 GA, DN 70 SML	DN 70 SML
612892	floor drain body type 61 HT DallBit PP NIRO, DN 100	DN 100
612847	floor drain body type 61 HT DallBit PP NIRO, DN 70	DN 70
612069	Floor drain body type 61 HT DallBit, DN 100	DN 100
612021	Floor drain body type 61 HT DallBit, DN 50	DN 50
612052	Floor drain body type 61 HT DallBit, DN 50/DN 70	DN 50/DN 70
611062	Floor drain body type 61 HT, DN 100	DN 100
611024	Floor drain body type 61 HT, DN 50	DN 50
611055	Floor drain body type 61 HT, DN 50/DN 70	DN 50/DN 70
611895	floor drain body type 61 HT, PP-NIRO, DN 100	DN 100
611840	floor drain body type 61 HT, PP-NIRO, DN 70	DN 70
612557	floor drain body type 61/1 HT DallBit, inlet DN 50, DN 50/DN 70	DN 50/DN 70
611550	floor drain body type 61/1 HT, inlet DN 50, DN 50/DN 70	DN 50/DN 70
503077	Frame S 15/150, 304 stainless steel, 150 x 150 mm	150 x 150 mm
503084	Frame S 15/150, 316Ti stainless steel, 150 x 150 mm	150 x 150 mm
495419	Frame V, S 15/120, 120 x 120 mm	
503022	Frame V, S 15/150, 304 stainless steel, 150 x 150 mm	
503053	frame V, S 15/150, 316Ti stainless steel, 150 x 150 mm	150 x 150 mm
495433	Frame V, S 15/d: 120 mm	d: 120 mm
503039	Frame V, S 15/d: 155, 304 stainless steel	d: 155 mm
503091	frame V, S 15/d: 155, 316Ti stainless steel	d: 155 mm
500465	Grating Quadra CD 15, 150 x 150 mm	150 x 150 mm
500359	Grating VC 15, 150 x 150 mm	150 x 150 mm
500397	Grating VN 15, 150 x 150 mm	150 x 150 mm
500458	Grating VR 15, d: 155 mm	d: 155 mm
500366	Grating VS 15, 150 x 150 mm	150 x 150 mm
500441	Grating VSR 15, 1.5 mm grate, non-slip, secured, 150 x 150 mm	150 x 150 mm
500342	Grating VSR 15, massive grate, non-slip, secured, 150 x 150 mm	150 x 150 mm
693099	Upper collar CeraDrain/TistoDrain S 15	